

1160 W. Orange Grove Ave., Arcadia, California, U.S.A. 91006

© Copyright 1966

A NEW SPECIES OF *EPINOTIA* HUBNER  
FROM BRITISH COLUMBIA  
(OLETHREUTIDAE)

T. N. FREEMAN

*Entomology Research Institute, Research Branch  
Canada Department of Agriculture, Ottawa, Ontario*

DURING THE PAST FEW YEARS an undescribed species of *Epinotia* Hbn. has been causing considerable injury by mining the leaves of the western hemlock [*Tsuga heterophylla* (Raf.) Sarg.] in northern Vancouver Island, British Columbia. The description of it is presented here to enable officers of the Canada Department of Forestry to report on its injury and control.

***Epinotia tsugana* Freeman, new species**

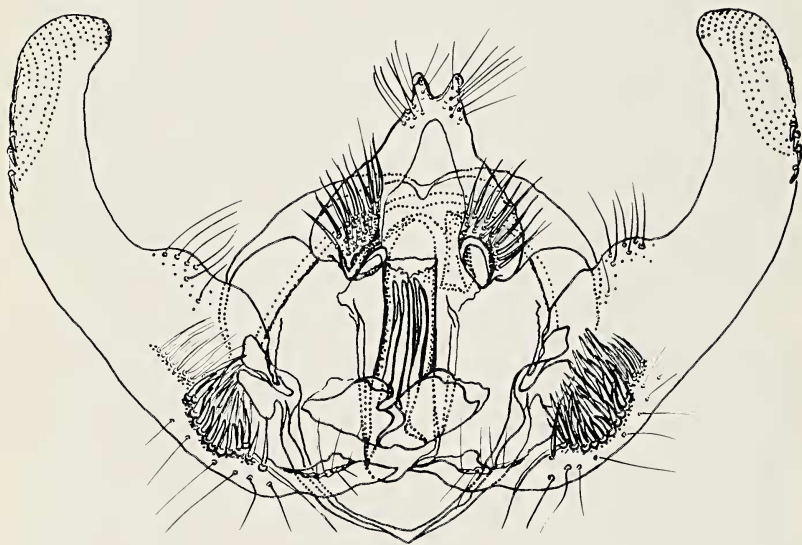
*Colour and maculation.* — Antenna grey with dark brown annulations. Palpus grey, darker apically. Head pale grey. Thorax grey. Forewing grey, sparsely covered with short, black, transverse dashes and light ochreous scales, more noticeable on the apical half; costal margin whitish, with evenly spaced, short transverse, black dashes; apical quarter with a transverse, metallic, leaden-grey bar from near the costa almost to the tornus; beyond with a subapical, curved, metallic, leaden-grey bar extending from the costa to the tornus; a narrow, black line extending around the apical margin; fringe grey, paler basally. Hind wing dark grey; fringe light grey, darker basally. Abdomen metallic leaden-grey. Legs grey; tarsi with black bands.

*Wingspread.* — 9.0-9.5 mm.

*Male genitalia* (Fig. 1). — Uncus well developed; bifid. Socii prominent; truncate at apex, Clasper arcuate; basal half much broader and with a cluster of short, thick spines near the base. Aedeagus short, stout, cylindrical; containing a cluster of six cornuti that are almost as long as the aedeagus.

*Type material.* — Holotype, male, Holberg, Vancouver Island, B.C., 13 May 1966. Type No. 7976 in the Canadian National Collection, Ottawa, Ontario. *Paratypes.* — Five males seven females, 2-20 May 1966; two females, 18 June 1965. All paratypes from Holberg, Vancouver Island, B. C. All type material reared from western hemlock by officers of the Canadian Forest Insect Survey, Canada Department of Forestry.

*Remarks.* — The maculation of *E. tsugana* somewhat resembles that of *Epinotia nanana* (Treit.). On the basis of the male genitalia however, *tsugana* is more closely allied to *Epinotia lomonana* (Kft.).



~~3~~

Fig. 1. Male genitalia of *Epinotia tsugana*.